

At RealKasa®, our market strategy is focused on discretion, premium presentation, and highly qualified buyer matching. Each property is positioned with a tailored narrative to maximize perceived value and market response.

## A 1909 Masterpiece: The Crown of Lisbon's Hills

Ref: 86119022 | Lisboa > Lisboa > Lisboa



### under request

|                      |        |                      |       |
|----------------------|--------|----------------------|-------|
| <b>Business type</b> | Sale   | <b>Property type</b> | House |
| <b>Bedrooms</b>      | 8      | <b>Bathrooms</b>     | 13    |
| <b>Area</b>          | 763 m2 |                      |       |

## Description

---

Step into a legacy of global discovery and architectural prestige. Originally commissioned in 1909 by one of Portugal's preeminent merchant families—traders whose influence spanned five continents—this grand estate is a timeless monument to Lisbon's Golden Age.

Awarded an honorable Valmor Mention, the property carries one of the nation's highest honors for heritage and design. It is more than a residence; it is a piece of Portuguese history waiting for its next visionary chapter.

### The Vision: Two Paths to Perfection

While currently configured as four expansive, sun-drenched apartments, the villa's soul remains that of a singular, palatial estate. Its versatile bones offer two distinct, high-value opportunities:

**The Ultimate Luxury Villa:** Reclaim the original floor plan to create a sprawling private compound. Imagine soaring ceilings, grand salons for entertaining, and a private garden sanctuary—all nestled in the city center.

**An Elite Boutique Hotel:** With its historic pedigree, existing plumbing configurations, and "Valmor" prestige, the property is perfectly positioned to become Lisbon's most talked-about luxury guesthouse, offering travelers an authentic, "Old World" immersion.

### Property Highlights

The estate spans a massive 1,155 m<sup>2</sup> plot, a rare luxury in Lisbon's historic core, providing a sense of scale and privacy that is nearly impossible to replicate.

**Total Built Area:** 763 m<sup>2</sup> (plus 80 m<sup>2</sup> of terraces and balconies).

**The Grounds:** A lush private patio, landscaped gardens, and a rare driveway/garage accommodating 4+ vehicles.

**Period Grandeur:** Original masonry, skylights that bathe the interior in Mediterranean light, and iconic architectural flourishes preserved for over a century.

**The Views:** Panoramic vistas over Lisbon's terracotta rooftops, stretching toward the city's most famous landmarks and the Tagus River.

### Current Composition

The villa is currently optimized for immediate use or high-yield rental, featuring:

**Ground Floor (333 m<sup>2</sup>):** A 3-bedroom garden residence with a private patio.

**First Floor Left (109 m<sup>2</sup>):** A 1-bedroom suite with a stunning 43 m<sup>2</sup> terrace.

**First Floor Right (132 m<sup>2</sup>):** A sophisticated 2-bedroom residence.

**Second Floor Duplex (189 m<sup>2</sup>):** A 2-bedroom penthouse with an upper-level lounge and wrap-around balconies.

### The Setting: Above the Clouds, Near the Castle

Perched in one of Lisbon's most emblematic hilltop neighborhoods, the villa sits on a quiet, leafy street just a short stroll from the historic São Jorge Castle. You are seconds away from the city's famous miradouros (viewpoints) and artisan boutiques, yet shielded from the bustle by the property's thick, historic walls and private gardens.

This is a rare invitation to own a landmark. Whether restored to its former glory as a single-family masterpiece or transformed into a world-class boutique destination, this 1909 villa remains one of Lisbon's most significant architectural treasures.

## Related Properties



Lisboa > Lisboa > Lisboa

### **43 m<sup>2</sup> store for sale in Lisbon, Portugal**

Ref: 86136356

under request



Lisboa > Lisboa > Lisboa

### **LOJA Avenidas Muito Central - INVESTIMENTO**

Ref: 85966656

€290.000

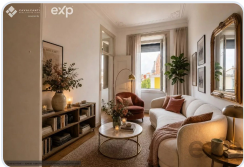


Lisboa > Lisboa > São Vicente

### **Penthouse 1-Bedroom Furnished Apartment in Lisbon**

Ref: 86902045

€305.000



Lisboa > Lisboa > Lisboa

### **T2 WITH TEJO VIEW IN GRAÇA | AUTHENTIC CHARM IN THE HEART OF LISBON**

Ref: 87114945

€338.000

## Real Estate Solutions

This brochure was prepared by RealKasa® for property presentation.

**Phone:** +351 914064060

**Email:** info@realkasa.pt

<https://realkasa.pt/en/listings/86119022>